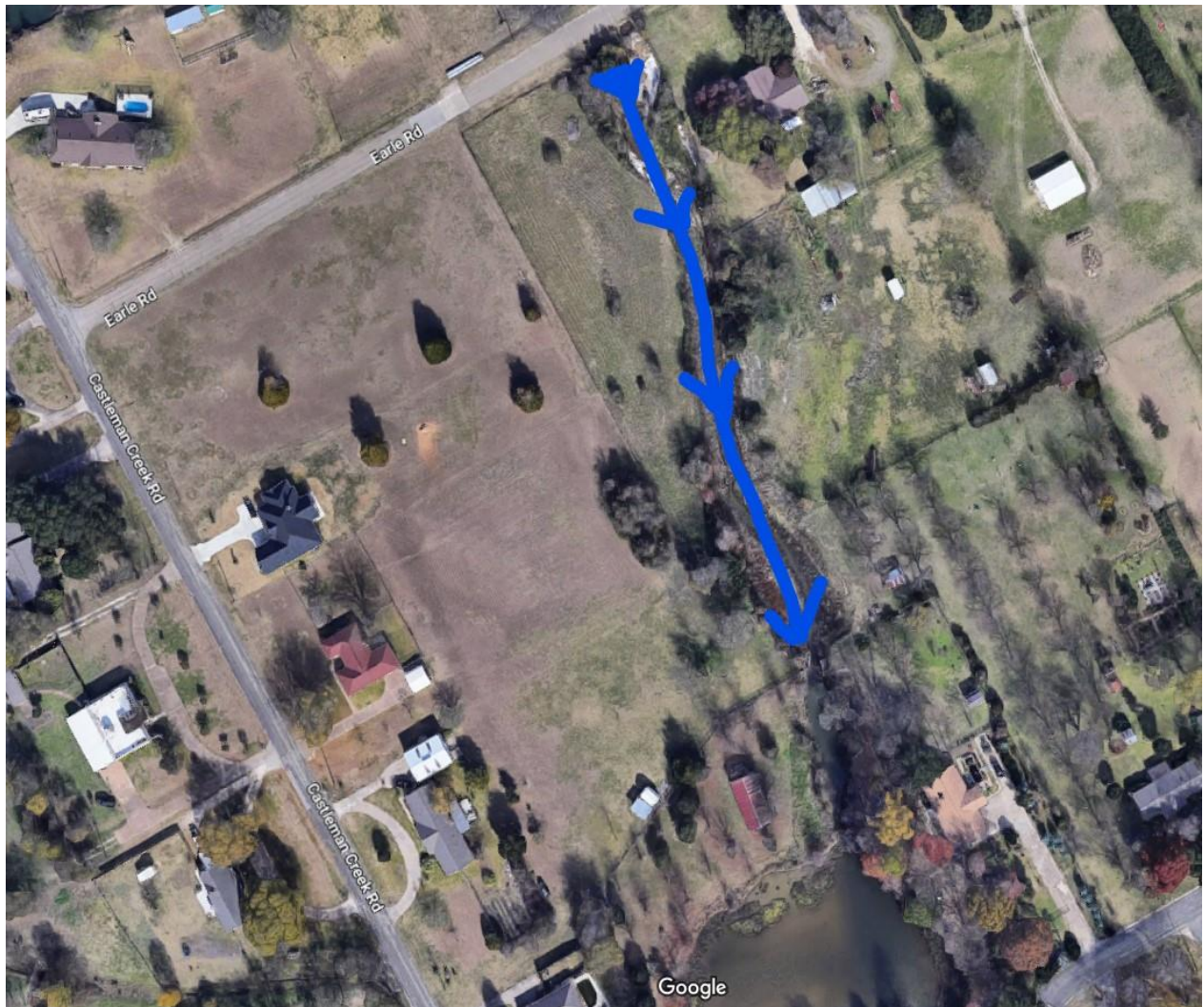


Drainage Project January 2023

Castleman Creek 600 and 700

This portion of Creek runs behind the 600 and 700 Blocks of Castleman Creek Rd. The creek was overgrown with brush and heavily silted. Drainage staff used the forester equipment to remove the overgrowth of brush and then proceeded to use the excavation equipment to remove silt and re-establish the grade and slopes. The project location is marked in blue below.



Brush overgrowth







Brush/overgrowth after forester



The forester grinds the brush to mulch





Silt Removal/Slopes re-established using excavator



Silt removed, exposing the solid rock beneath it.



An island of deposited loose rock causing flow disruption



Rock Island Removed



A BEAVER DAM! (The ol Drainage Nemesis returns...)



BEAVERS DEFEATED!



Grading and silt removal





