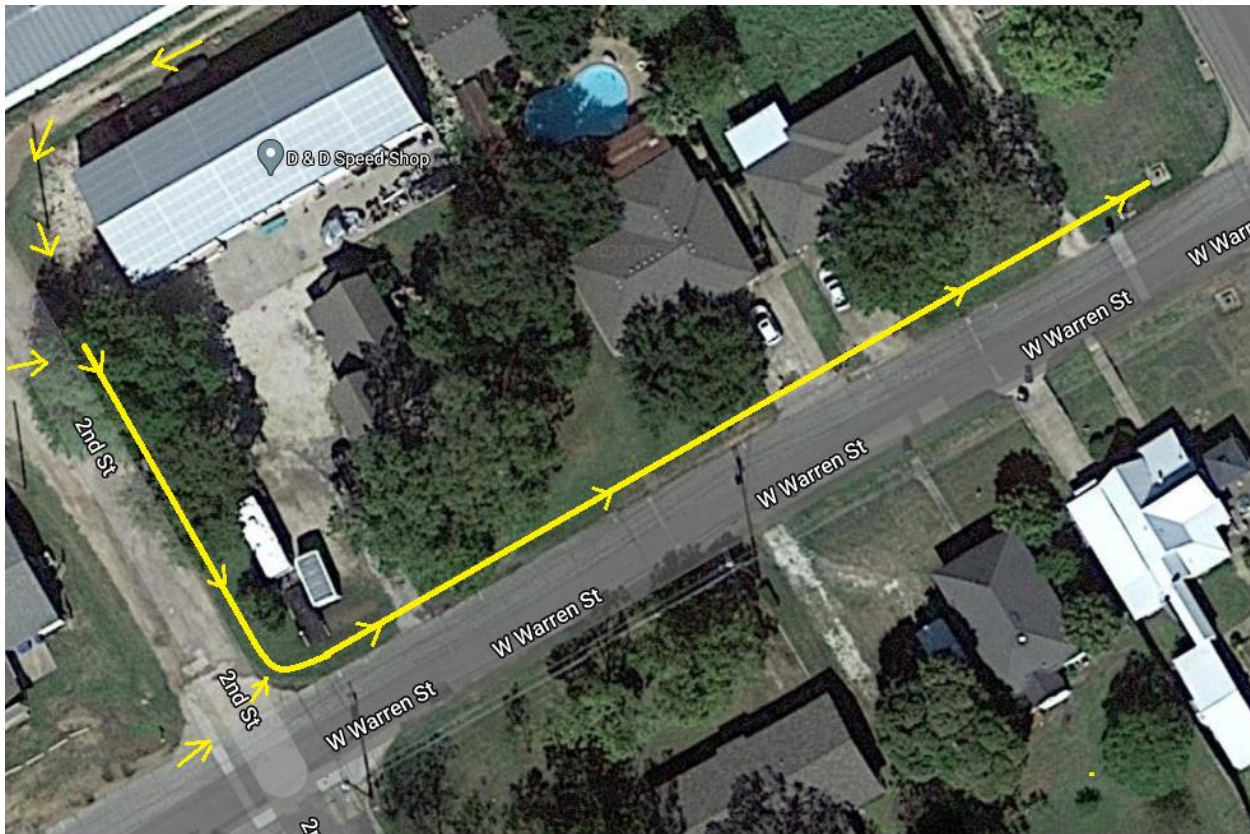


W Warren and 2nd Street Ditch



This drainage issue was reported by the owner of the property located at 140 W Warren St. The owner explained that this has been an ongoing issue for several years. The owner stated that when it rains the stormwater will not drain properly which causes it to back up onto his property and buildings. Our findings were as follows:

- The ditch on 2nd Street was so heavily silted it was nonexistent. The driveway located on 2nd street going into D&D had a makeshift culvert pipe consisting of a section of 6" steel mated to another section of 6" class pvc water pipe. The piping was broken down and stopped up completely. We replaced this with a section of 12" corrugated tin horn. A grade of 1.0% was established and a ditch was dug from the driveway to the corner of 2nd Street and W Warren St. Water naturally flows from several different directions down this path and to this corner.
- The ditch on W Warren was heavily silted from the corner of 2nd St to the receiving vault located at W Warren and South 1st St. There are 4 driveways located within this stretch of the ditch. Each one has piping ranging from 10-12". The ditch and mouths of the pipes were heavily silted. All of the pipes were stopped up, two of which were completely covered with the tops barely visible. Each pipe was cleaned out. We used a grade of 1% to desilt the ditch from the corner of 2nd Street to the receiving vault. Approximately 4-6" of silt was removed throughout.
- All areas requiring excavation were covered with erosion control blanketing and seeded with grass seed.

W Warren and 2nd Street Ditch



W Warren and 2nd Street Ditch



W Warren and 2nd Street Ditch



W Warren and 2nd Street Ditch



W Warren and 2nd Street Ditch



W Warren and 2nd Street Ditch



W Warren and 2nd Street Ditch

